



- Extra-wide work area
- Light weight and handy
- Great Ergonomics
- ISO 4 Class and Comprehensive Barrier Protection
- Energy efficient & Reduced Maintenance Costs
- Acoustic comfort
- Easy to clean
- Wide range of accessories and options



Related Products

To maximise operational efficiency and learn more about these products contact your local representative.



Sealsafe Plus: high containment, certified protection from allergens, high density and practicality of use. The IVC (r)evolution.



Sealsafe Plus RAT: high containment, protection from allergens, high density and practicality of use.



Double Decker. The ultimate 3D rat group housing system.



Logistic trolleys offer safety and ergonomic features that enable high load-density for moving cages and bottles, crates, pallets and covers.



GP Decontamination Lock. Full decontamination cycle, with 6 log reduction, in one hour all inclusive. The unit may be used with Vaporized Hydrogen Peroxide generators from different vendors, gaseous Chlorine Dioxide generators and for chemical fogging.

ENVIRONMENTAL SUSTAINABILITY: MINIMIZE IMPACT MAXIMIZING VALUE

What Tecniplast did to become leader in sustainability:

Company:

- Quality Management System Certification according to ISO 9001 and Environmental Management System Certification according to ISO 14001.
- Certified Environmental Report according to Eni Foundation Enrico Mattei Guidelines.

Products:

- Life Cycle Assessment (LCA) according to ISO 14040 and ISO 14044.
- Carbon Footprint according to PAS 2050.
- Environmental Data Sheet according to ISO 14025.
- Contribution to credits under the LEED rating system.



HEADQUARTERS
ITALY | Tel. +39 0332 809711 • www.tecniplast.it • E-mail: tecnicom@tecniplast.it

SISTER COMPANIES
AUSTRALIA/NEW ZEALAND | Tel. + 61 2 8845 6500 • www.tecniplast.it • E-mail: info@tecniplast.com.au
CHINA | Tel. + 86 21 50810920 • www.tecniplast.cn • E-mail: tecniplastchina@tecniplast.it
FRANCE | Tel. 04 72 52 94 41 • www.tecniplast.fr • E-mail: info@tecniplast.fr
GERMANY | Tel. 08805 921320 • www.tecniplast.de • E-mail: info@tecniplast.de
UNITED KINGDOM | Tel. 0845 0504556 • www.tecniplast.it • E-mail: info@tecniplastuk.com
JAPAN | Tel. + 03 5770 5375 • www.tecniplast.it • E-mail: info@tecniplastjapan.co.jp
USA | Toll Free: 877.669.2243 • www.tecniplastusa.com • E-mail: info@tecniplastusa.com
CANADA | Toll Free: 855.347.8718 • www.tecniplastcanada.com • E-mail: info@tecniplastcanada.com

To find your local distributor, please visit www.tecniplast.it

Tecniplast reserves the right to change or modify product and or specifications without notice or obligation. Aria Changing Station is a Tecniplast trademark.

1/Extra Wide Work Area

The new ARIA Changing Station features an extra-wide work area (1,5 x 0,79m / 5ft x 2.6ft wide) for greater productivity and exceptional comfort to personnel. Wide variety of options and accessories available.

Models Available:

- CS-60 Dual-Side changing station suitable for specific applications such as weaning or sex separation.
- CS-60D Single-sided changing station designed for rat cages (i.e. Double Decker, GR900).

2/Light Weight and Handy

ARIA changing station is incredibly light, yet sturdy, robust, and much more durable than other alternatives in the market**.

ARIA combines the resistance of polymer with an innovative design for unsurpassed mobility and manageability. Integrated stainless steel push/pull bars on both sides of the cabinet make it easy to maneuver and transport inside the facility.

3/ Great Ergonomics

The wide access to the larger work surface makes the introduction and removal of cages easy. A hinged, safety-glass provides protection and clear visibility into the work area.

The adjustable height of the work area offers ergonomic comfort to the operator, whether seated or standing.

The working surface can be set flat or recessed to match the operator's needs.

4/ISO 4 Class and Comprehensive Barrier Protection

The new ARIA Changing Station offers ISO Class 4 Air Quality (ISO 14644-1).

This combined with an unrivalled and high efficiency ventilation system assures protection of personnel from allergens and protection of animals from external contaminants and cross contamination during animal handling procedures.

5/Energy Efficient & Reduced Maintenance Costs

Eco-friendly products that reduce environmental impact are one of Tecniplast's top priorities. The ARIA Changing Station is equipped with EC high-performance and superior efficiency motors; the best value in terms of lower energy costs, longer filter life, reduced noise, vibration, and heat emissions.

In addition, an innovative LED bar- located in the ceiling of the station's work area- is equipped with a dimmer that allows modifying the light intensity as needed. This is particularly beneficial for procedures with light-sensitive mice. The LED bar is a standard feature in all models.

When compared to traditional fluorescent lights, LEDs offer higher efficiency and longer life than other sources (40,000 hrs); they are more robust, smaller in size, and faster to light.

6/Acoustic Comfort

The unique design of the Tecniplast plenum minimizes noise and vibration providing acoustic comfort for both the operators and the animals.

ARIA is integrated with a TFT LCD touchscreen (4.3-inch) which allows continuous monitoring of cabinet airflow.

An innovative microprocessor control system supervises the cabinet functions and automatically maintains a constant airflow rate.

7/Easy to Clean

Highly resistant to Chlorine compounds and derivatives with easy-to-clean rounded and smooth surfaces. Hinged view screen for easy access to the work area for cleaning purposes. Special protective net to prolong the life span and efficiency of the pre-filters and HEPA filters below the work area.

Removable tank for refuse disposal and perimeter drain.

8/Wide Range of Accessories and Options

ARIA comes with a wide range of accessories and optional features to make the cage changing procedure easier and more efficient.

Accessories:

Integrated LED strip with dimmer; retractable cable; two power supply sockets protected with drip-proof covers; electrical lifting system.

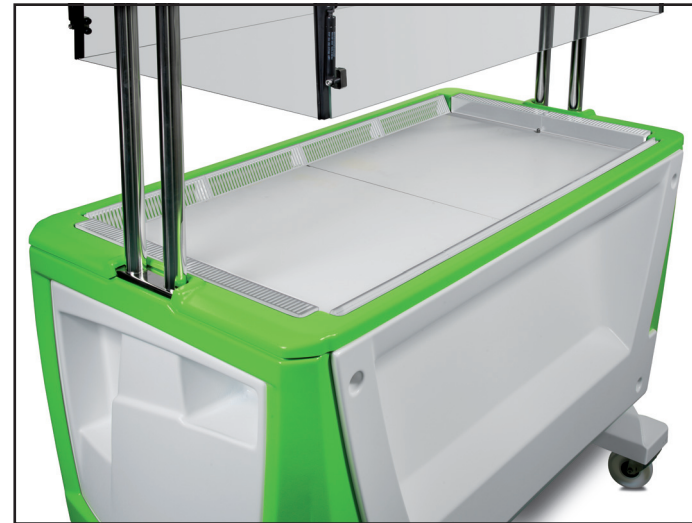
Options:

Red LED lamp to work at night; obstacle detector to avoid risk of collision when lowering the lifting system; decon-kit to decontaminate and deodorize the environmental air; motion detector; easy-feed ABS dual chute feed hopper with plastic scoops; folding shelf kit (TRESPA®); Sani-Jet spray hand sanitizer; cage top holder; folding closure panel; folding closure panel case; magnifier kit.



Changing Station

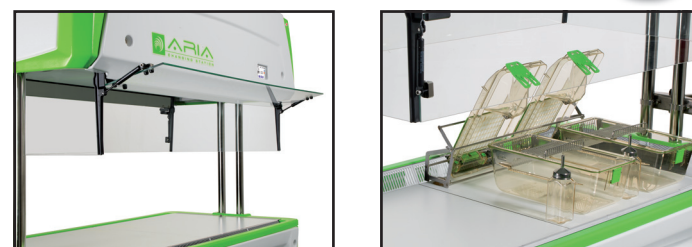
Extra Wide Work Area 1



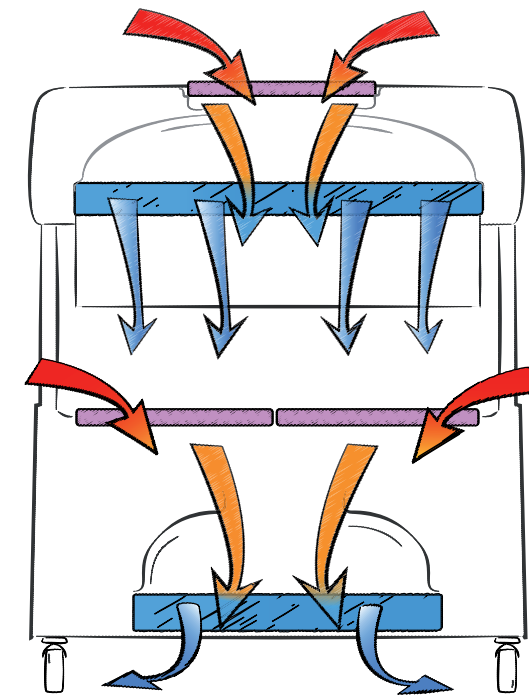
Light Weight and Handy 2



Great Ergonomics 3

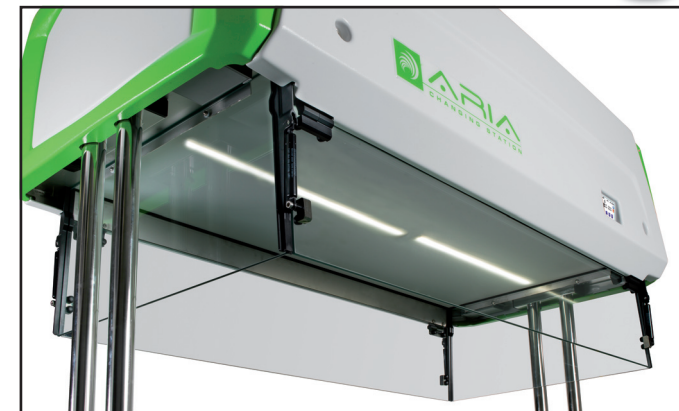


ISO 4 Class and Comprehensive Barrier Protection 4



Environment air Pre-filtered air HEPA filtered air

Energy Efficient & Reduced Maintenance Costs 5



Acoustic Comfort 6



14:28 CS 60 22°C 20/06/2014

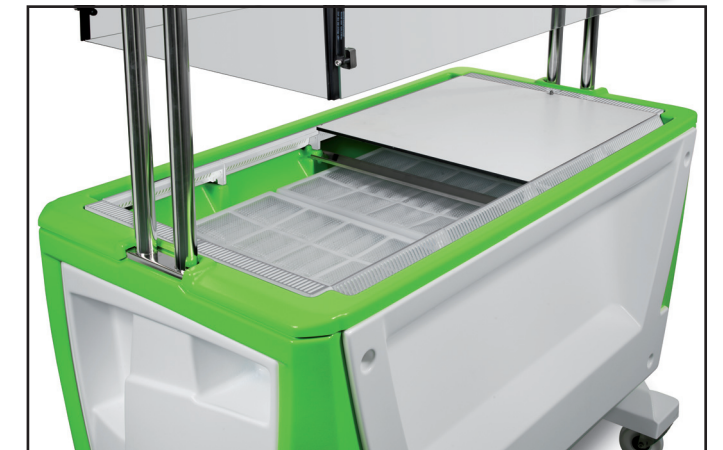
LAF 0.32 m/s
EXH 1500 m³/h



TECHNICAL SHEET

	CS-60	CS-60D
Overall Dimensions (W x D x H) - mm/inch	1590 x 790 x 1954 - 2278 62" 5/8 x 31" 3/8 x 76"7/8 - 89" 5/8	1590 x 790 x 1994 - 2318 62" 5/8 x 31" 3/8 x 78"4/8 - 91" 2/8
Working area Dimensions (W x D x H) - mm/inch	1300 x 610 x 640 51" 1/8 x 24" x 25" 2/8	1394 x 610 x 680 54" 7/8 x 24" x 26" 6/8
Access opening height - mm/inch	340 13" 3/8	420 16" 4/8
Weight - Kg/lbs.	195 Kg 429 lbs.	200 Kg 440.9 lbs.
Power Supply	230V - 50/60Hz 100/115V - 50/60Hz	230V - 50/60Hz 100/115V - 50/60Hz
Control	Microprocessor driven with control panel	Microprocessor driven with control panel
Classification of Air Cleanliness (according to ISO 14644-1)	ISO 4	ISO 4

Easy to Clean 7



Wide Range of Accessories and Options 8

