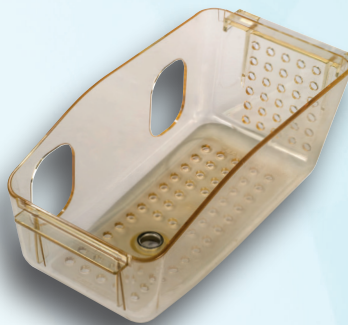
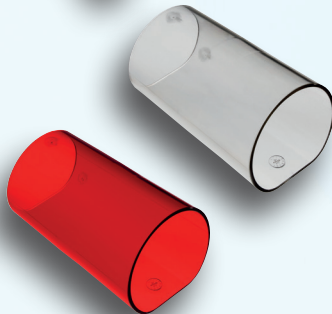
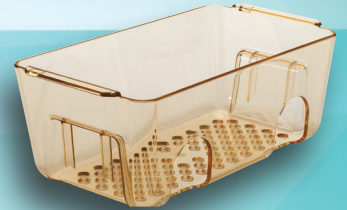
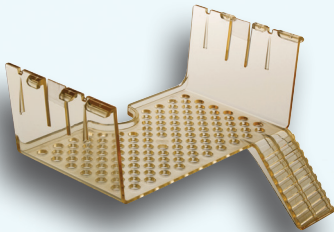


AMOUSEMENTS





MOUSE TECNITUNNEL

The MOUSE TECNITUNNEL is an environmental enrichment tool that establishes a dynamic and layered three-dimensional environment. It can be installed, suspended, or on the cage surface. Its flat side ensures stability and comfort for animals while preventing rolling, making handling easier for users. The conical shape, designed to resemble the human hand, allows it to double as a mouse scoop, reducing contact and stress during transfers while being ergonomic for the operators. Also available in red color, it adds diversity to the cage space. The TECNITUNNEL can be suspended in GM500 and EM500 cages using specific clips for stainless steel or plastic lids, compatible also with blue line cages.

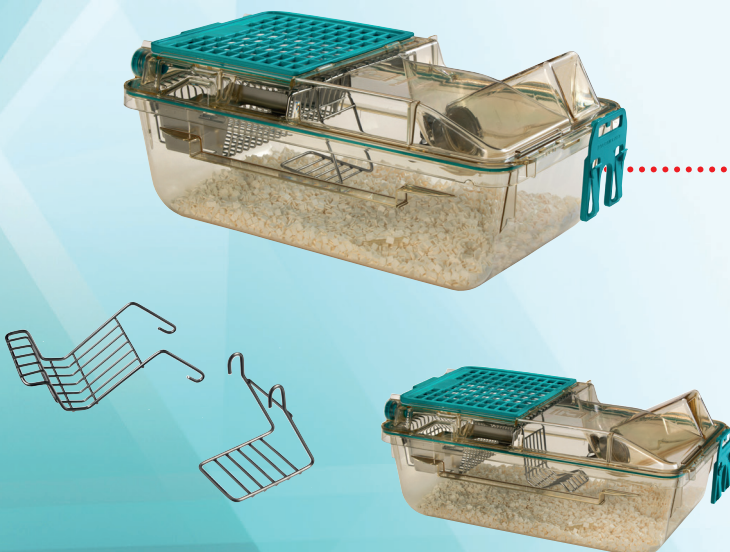
MOUSE BOX

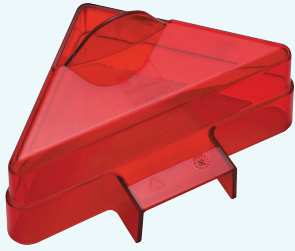
The MOUSE BOX stimulates animal curiosity and can be filled with nesting or other materials, keeping animals engaged. It can be installed suspended or on the cage floor, where it also serves as a platform to enhance the cage environment. The Smart Clip adapts to the chosen stainless steel or plastic lid upon first installation for easy setup. The MOUSE BOX is suitable for all EM500 Lids in case of suspended installation or for all Tecniplast cages when positioned on the cage floor.



MOUSE SWING AND MOUSE LOUNGE

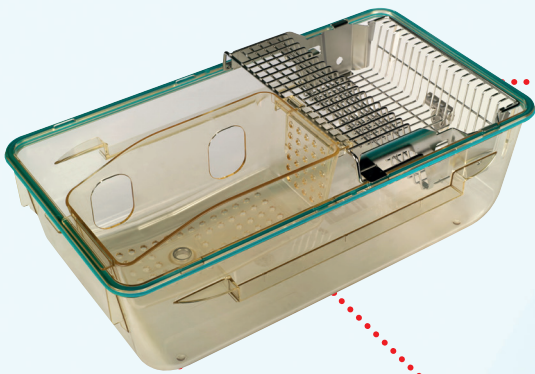
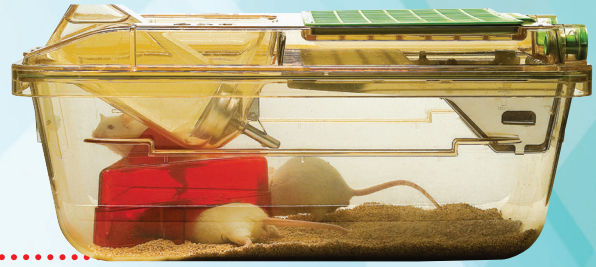
The MOUSE SWING and MOUSE LOUNGE are suspended enrichment pieces that create a multi-level 3D cage environment. The MOUSE SWING gently oscillates when animals climb onto its platform, while the MOUSE LOUNGE provides a stable platform for weaker animals to access food with ease. In cages with autowatering systems, they also serve as safe harbors in case of flooding. Both enrichment pieces are compatible with stainless steel and plastic Emerald lids and can be also used as animals transfer devices.





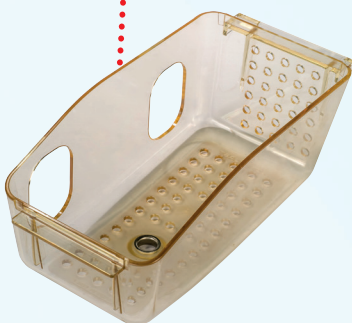
MOUSE HOUSE

The MOUSE HOUSE delivers a sophisticated and immersive three-dimensional environment within standard laboratory caging. It incorporates multiple entrances, a shelf, and a large nesting area. Its design maximizes the use of floor area and encourages mice to designate their cage space.



MOUSE LOFT/POUCH LOFT/BALCONY

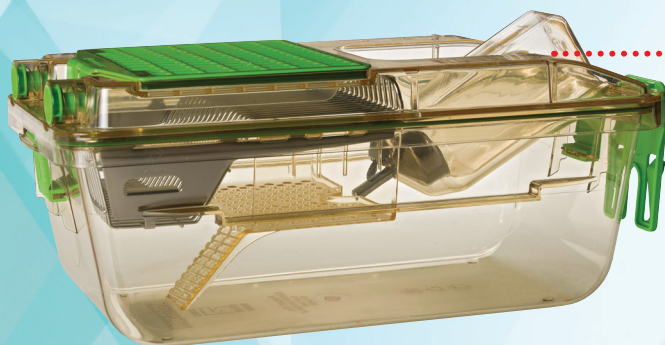
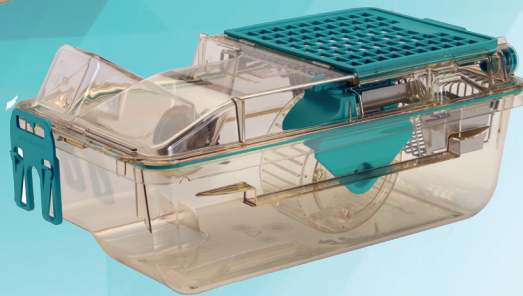
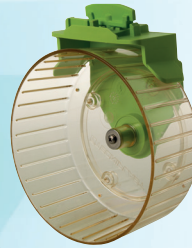
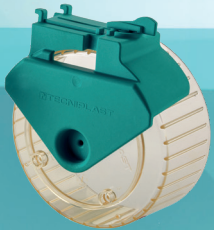
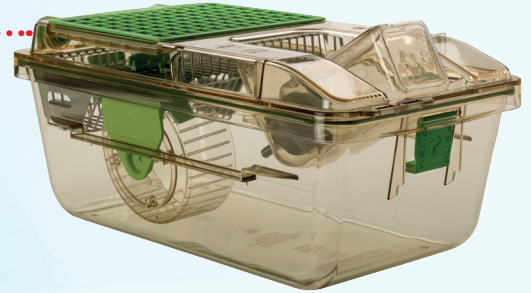
The MOUSE LOFT and the MOUSE BALCONY are hanging environmental enrichment pieces that enhance the complexity of the 3D environment within the cage. The MOUSE POUCH LOFT is a multi-purpose mouse loft designed for cages equipped with the Automatic Watering System. Its 2-in-1 design offers the advantage of being used as an enrichment or a useful solution to securely hold a bag of water. It is easy to fit by placing it between the lid and the top edge of the front wall of the cage.



GYM500

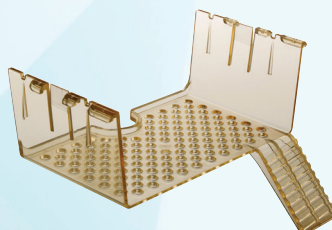
The ACTIVITY WHEEL is environmental enrichment designed to increase animal welfare by promoting voluntary activity of mice in IVCs. At the same time, it is a useful research tool to monitor the physical activity of the animals. Both Emerald and Green Line Activity Wheel are made of polysulphone. The Emerald activity wheel is available in two different versions to allow installation on either stainless steel or plastic lid configuration.

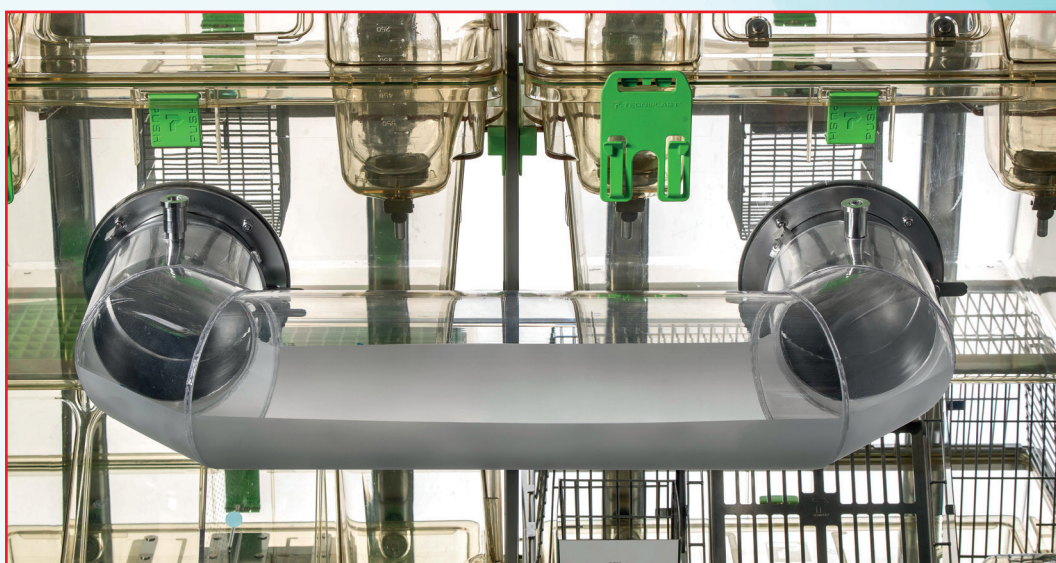
Design and Utility Model granted, details on request. Copyright is licensed exclusively to Tecniplast from Cambridge Enterprise Limited. Cambridge Enterprise Limited is a wholly owned subsidiary of the University of Cambridge



MOUSE MEZZANINE

The MOUSE MEZZANINE is attached to the wire bar lid and works as a lounge for the cage inhabitants. It can be added to all the existing GM500 cages with a standard lid. Mouse Mezzanine is available in polysulfone or red polyetherimide to create a more intimate environment.





..... INTERLINKING

INTERLINKING is the ideal enrichment to promote the animals' natural behaviour by providing an interactive environment that stimulates interaction and ensures the reliability and reproducibility of scientific results. This cage system consists of a circular tunnel that connects two neighbouring cages on the same rack through frontal openings on the cages. Interlinking allows the animals to move freely from one cage to another and, thanks to doors at openings level, it is possible to regulate the animal's access to the tube. Interlinking is available for mouse and rat cages for Green Line and Emerald Line.

Compatibility Table:

Amusement Compatibility Table

Enrichement Type	EM500	GM500	GR900	GR1800DD	1145 NEXT	1285L NEXT	1291H NEXT
Suspended Mouse TecniTunnel	✓	✓	X	X		✓	
Mouse TecniTunnel				✓			
Mouse Clip for Green/Blue Line	X	✓	X	X	✓	✓	✓
Mouse Clip for Emerald Line	✓				X		
Suspended Mouse Box	✓	✓			X		
Mouse Box				✓			
Mouse Swing	✓				X		
Mouse Lounge	✓				X		
Mouse Loft	✓	✓	✓			X	
Mouse Pouch Loft	✓	✓	✓			X	
Mouse Balcony	✓				X		
Activity Wheel	✓	✓	X	✓		X	
Mouse Mezzanine	X	✓			X		
Interlinking	✓	✓	✓	✓		X	



COMPANY WITH
QUALITY SYSTEM
CERTIFIED BY DNV GL
= ISO 9001 =

COMPANY WITH
ENVIRONMENTAL SYSTEM
CERTIFIED BY DNV GL
= ISO 14001 =

 **TECNIPLAST**

HEADQUARTERS

ITALY | Tel. +39 0332 809711 · www.tecniplast.it · E-mail: tecnicom@tecniplast.it; venditeitalia@tecniplast.it

Sister Companies

AUSTRALIA/NEW ZEALAND | Tel. + 61 2 8845 6500 · www.tecniplast.it · E-mail: info@tecniplast.com.au

CANADA | Toll Free: +1 855.347.8718 · www.tecniplastcanada.com · E-mail: info@tecniplastcanada.com

CHINA | Tel. + 86 (0)21 50810920 · www.tecniplast.cn · E-mail: tecniplastchina@tecniplast.it

FRANCE | Tél. +33 (0)4 72 52 94 41 · www.tecniplast.fr · E-mail: info@tecniplast.fr

GERMANY | Tel. +49 (0)8805 921320 · www.tecniplast.de · E-mail: info@tecniplast.de

JAPAN | Tel. +81 (0)3 5770 5375 · www.tecniplast.it · E-mail: info@tecniplastjapan.co.jp

SWITZERLAND | Tel +41 (0)81 750 31 40 · www.tecniplast.ch · Email: info@tecniplast.ch

UNITED KINGDOM | Tel. + 44 (0)345 0504556 · www.tecniplastuk.com · E-mail: info@tecniplastuk.com

USA | Toll Free: +1 877.669.2243 · www.tecniplastusa.com · E-mail: info@tecniplastusa.com

Tecniplast reserves the right to change or modify product and/or specifications without notice or obligation.